



**Indoor/Outdoor  
LED Rental Screen**

**AW Series**



Super Light



Ultra Thin



Radiate Fast



High Strength



Fast Installation



Easily Maintained



Strong Universality



High Cost Effective



Left Side



Front/Rear Side



Right Side

960\*960-B压铸箱体  
960\*960-B DIE CASTING CABINET



**Introduction**



AW SERIES LED display weight Only 25kg

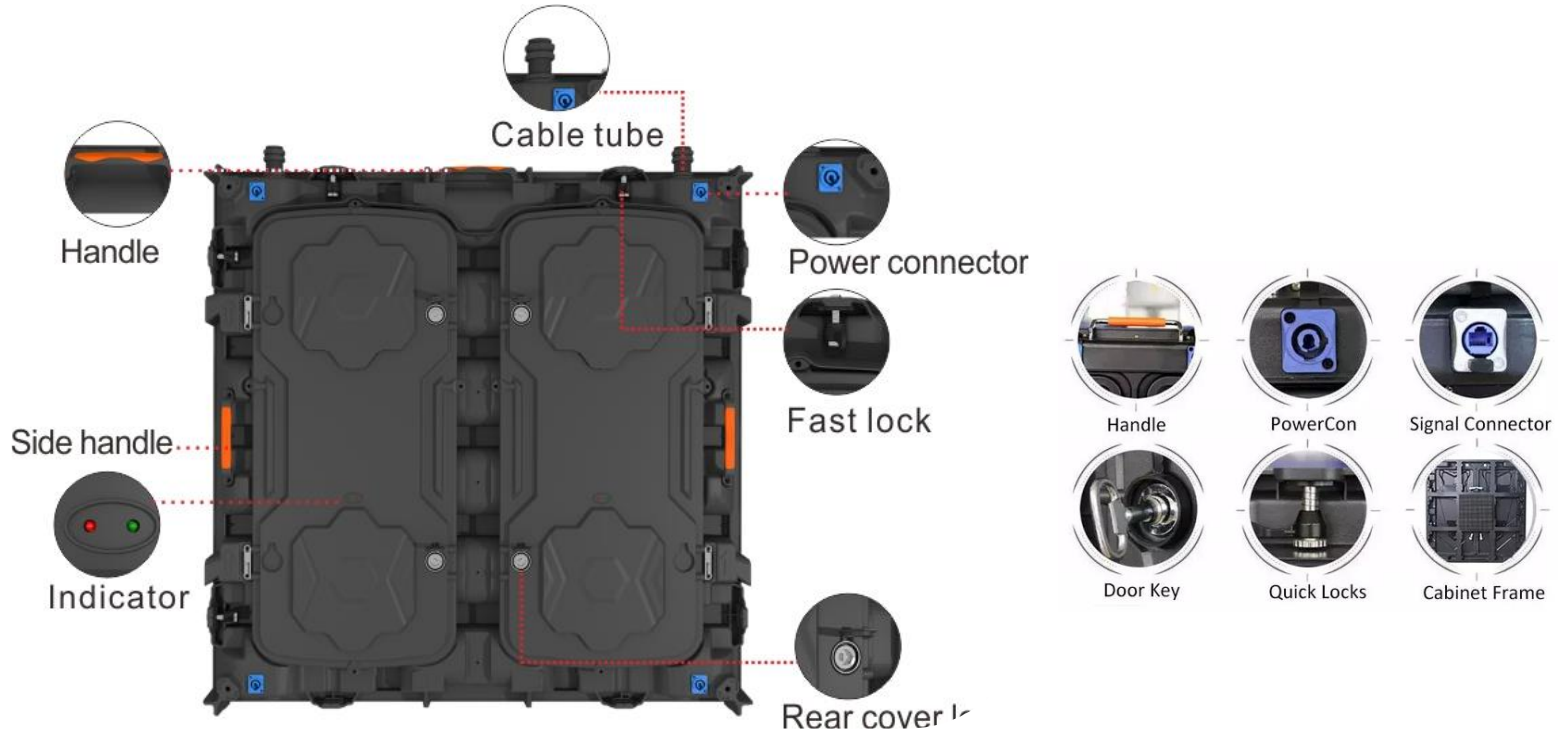
Easy for transport

Save your labor cost

Convenient for installtion

Assembly and disassembly.

# Cabinet Structure



## Cabinet Structure



Signal cord with lock to avoid loose



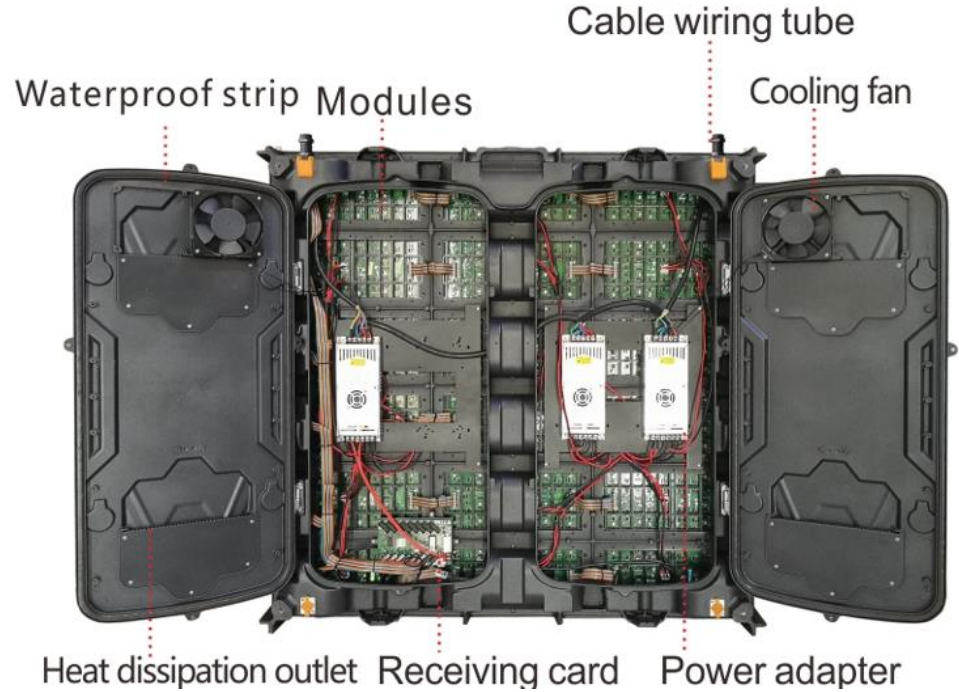
4 layer coating on PCB board as well as the back side



Cooling fan



Heat dissipation outlet



## IP65



### IP65 Waterproof

The fully sealed cabinet is weatherproof, dustproof, damp-proof, bringing the ingress protection of led display up to a new level.

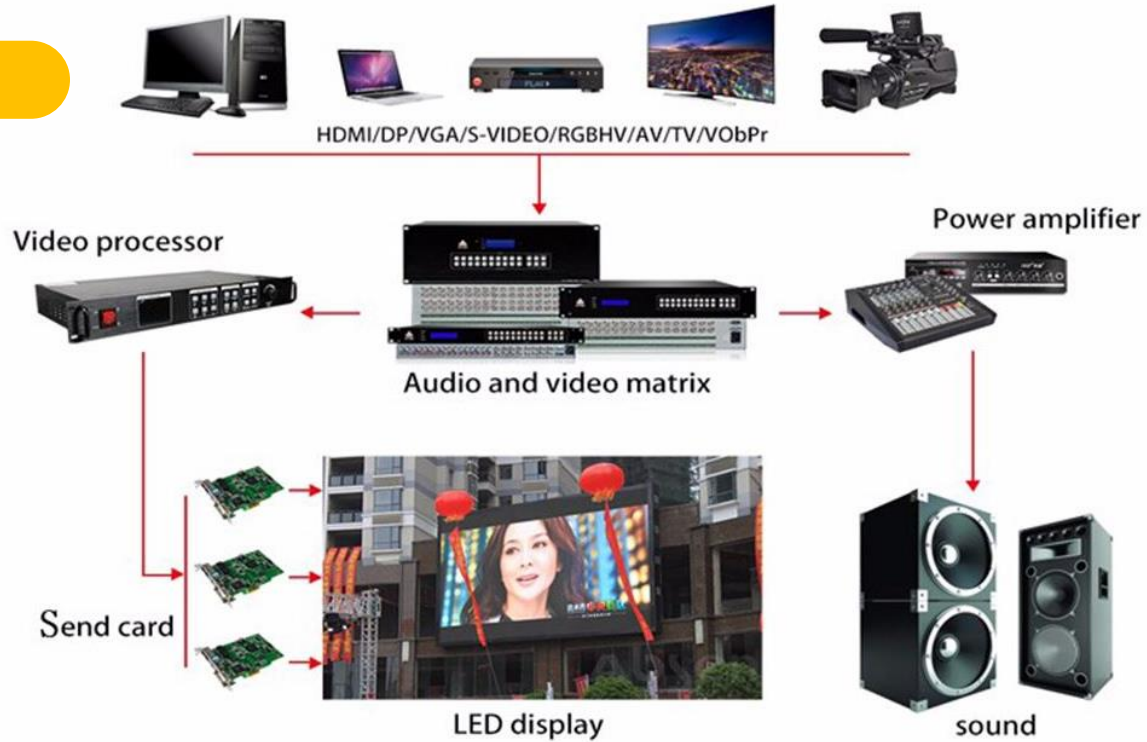


# 160° Super wide viewing angle

Perfect presentation of images from any angle



# Control



High refresh rate



High refresh rate

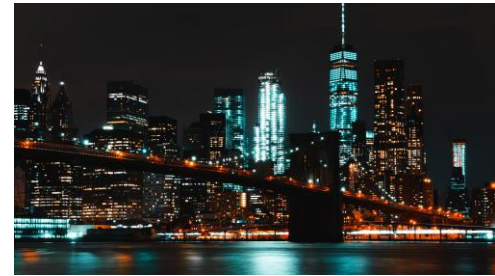


Low refresh rate

High grey scale



Hig grey scale



Low grey scale

## Aging Testing



## Aging Testing



## Wooden Case



## Flight Case



## Accessories



**Main Signal Cable**



**Main Power Cable**



**Signal Cable**



**Power Cable**



**Module Power Cable**



**Module Data Cable**



**M10 Screw**



**Butterfly Lock**

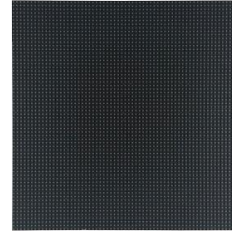
## Accessories



**IC and Lamps**



**Module Mask**



**LED Module**



**Power Supply**



**Receiving card**



**Sending Box**



**Video Processor**



**Hanging Beam**



## Variability Installation



Hanging



Stacking

## Indoor

Pixel Pitch(mm)	2.5	3.076	4	5
Display Size(mm)	960x960	960x960	960x960	960x960
Resolution(dots)	384x384	312x312	240x240	192x192
Brightness(nits)	1000	1000	1000	1000
Viewing Angle(degree)	H:V(160,160)	H:V(160,160)	H:V(160,160)	H:V(160,160)
Contrast	3000:1	3000:1	3000:1	3000:1
Refresh Rate(Hz)	3840	3840	3840	3840
Grey Scale(bit)	14	14	14	14
Viewing Distance(m)	>1	>1	>1	>2
Voltage(V)	AC110/220+-15%	AC110/220+-15%	AC110/220+-15%	AC110/220+-15%
AP/MP(W/m <sup>2</sup> )	230/690	230/690	230/690	230/690
IP Grade	IP54	IP54	IP54	IP54
Life Span(H)	50000	50000	50000	50000
Communications	WIFI/LAN/USB	WIFI/LAN/USB	WIFI/LAN/USB	WIFI/LAN/USB



## Our Project



Screen Size: 18.432m<sup>2</sup>  
Pixel Pitch:2.5mm



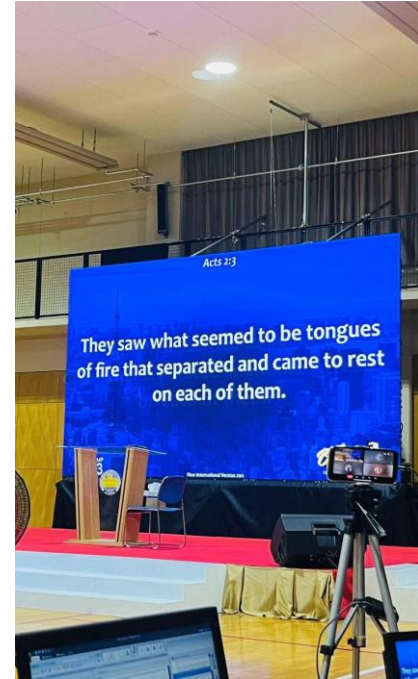
Screen Size: 87.5m<sup>2</sup>  
Pixel Pitch:2.9mm



Screen Size: 10.368m<sup>2</sup>  
Pixel Pitch:1.875mm



Screen Size: 10m<sup>2</sup>  
Pixel Pitch:3.9mm



Screen Size: 15m<sup>2</sup>  
Pixel Pitch:2.6mm

## Our Project



Screen Size: 15m<sup>2</sup>  
Pixel Pitch:3.91mm



Screen Size: 30m<sup>2</sup>  
Pixel Pitch:3.91mm



Screen Size: 6m<sup>2</sup>  
Pixel Pitch:3.91mm



Screen Size: 21m<sup>2</sup>  
Pixel Pitch:3.91mm



Screen Size: 1.1m<sup>2</sup>  
Pixel Pitch:3mm